

St. Luke's Development Corporation

117-129 Whalley Avenue Apartment
Complex

Project Update for Website

Project Overview

Remediation of the properties for the construction of the 5-story, 49-unit apartment complex at 117-129 Whalley Avenue began on August 1, 2025.

Initial work include includes abatement, demolition and remediation.

EPA Grant and Remediation

The remediation work is funded by a \$500,000.00 EPA grant awarded to St. Luke's Development Corporation (SLDC). The work is divided into three phases:

- - Phase I: 129 Whalley Avenue
- - Phase II: 117 Whalley Avenue
- - Phase III: 125 Whalley Avenue

Community Meeting

Before work began, a series community meetings were held at the Parish Hall of St, Luke's Church to provide information and address concerns of neighbors.

The last meeting was on June 30, 2025

Community Meeting: June 30, 2025

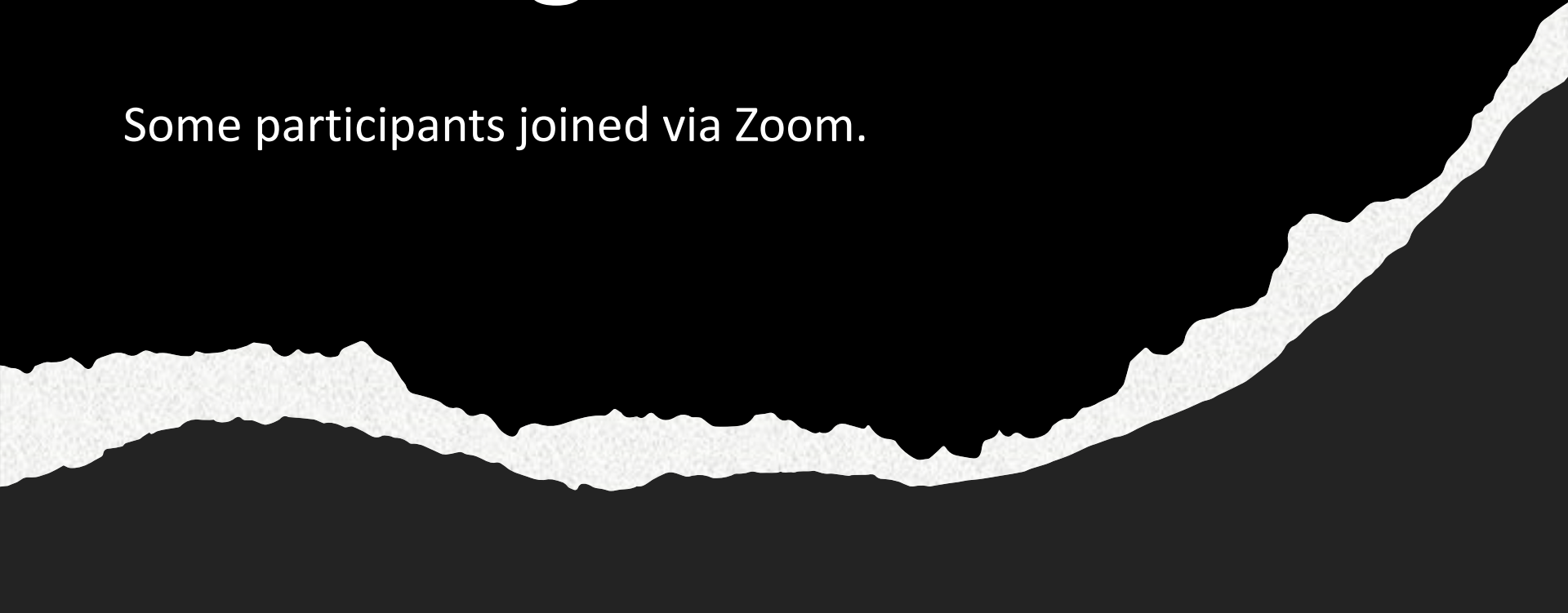




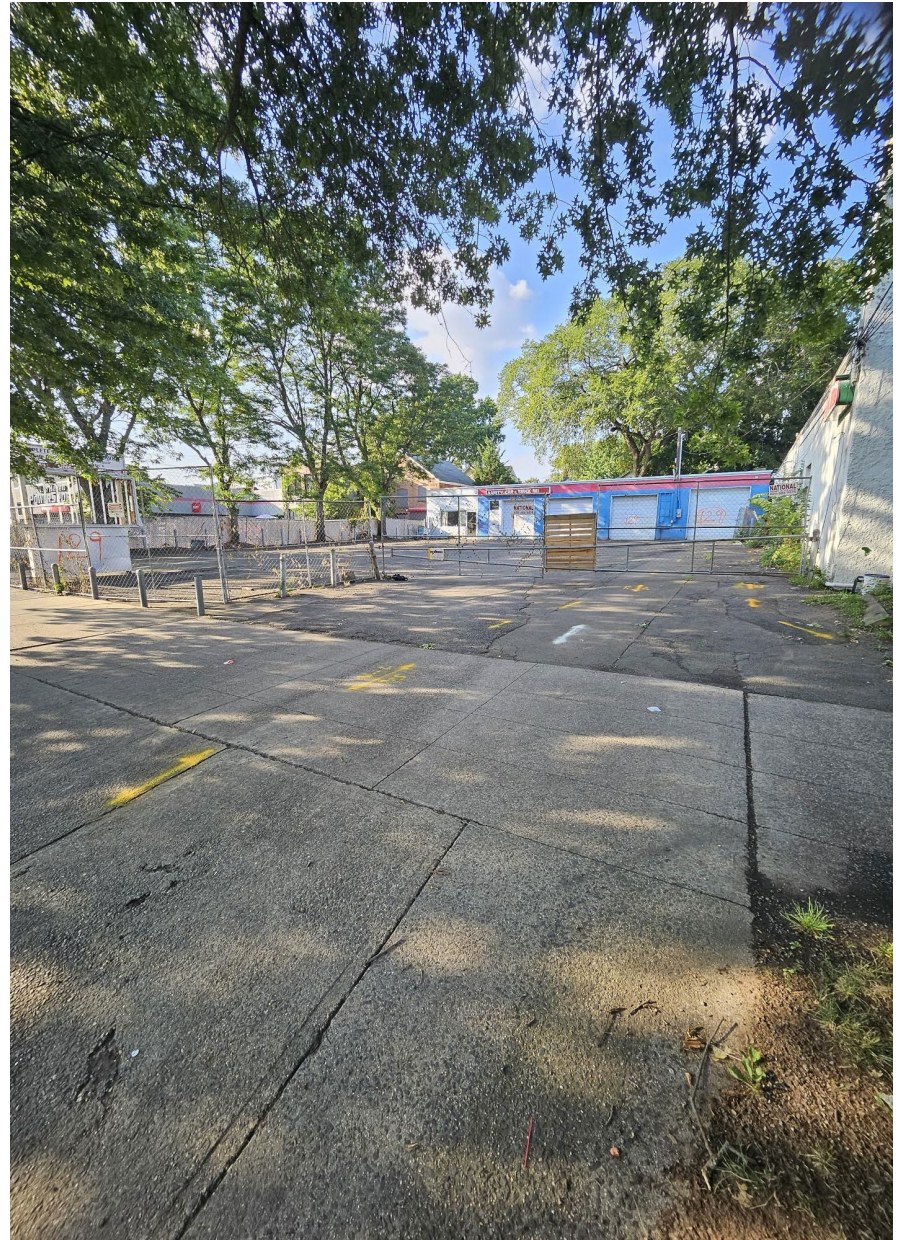
Community Meeting

Community Meetings

Some participants joined via Zoom.



PHASE I:
129 Whalley
Avenue





Taking Care of the Utilities

Phase II:
117
Whalley
Avenue



Phase II: 117 Whalley Avenue



Phase II





Phase III: 125
Whalley
Avenue

Current Challenges

Remediation work is slightly delayed due to Papa Johns still occupying 125 Whalley Avenue. SLDC is actively working with its co-developer Glendower LLC, and the Yale CED Clinic to facilitate the relocation of Papa Johns.

Contractors

J & J BROTHERS, LLC

https://www.ctcompanydir.com/company?utm_source=j-j-brothers-llc

EnviroMed

<https://enviromedservices.com/>

All Connecticut Companies.